



Copper Patch Panel



DATA SHEET

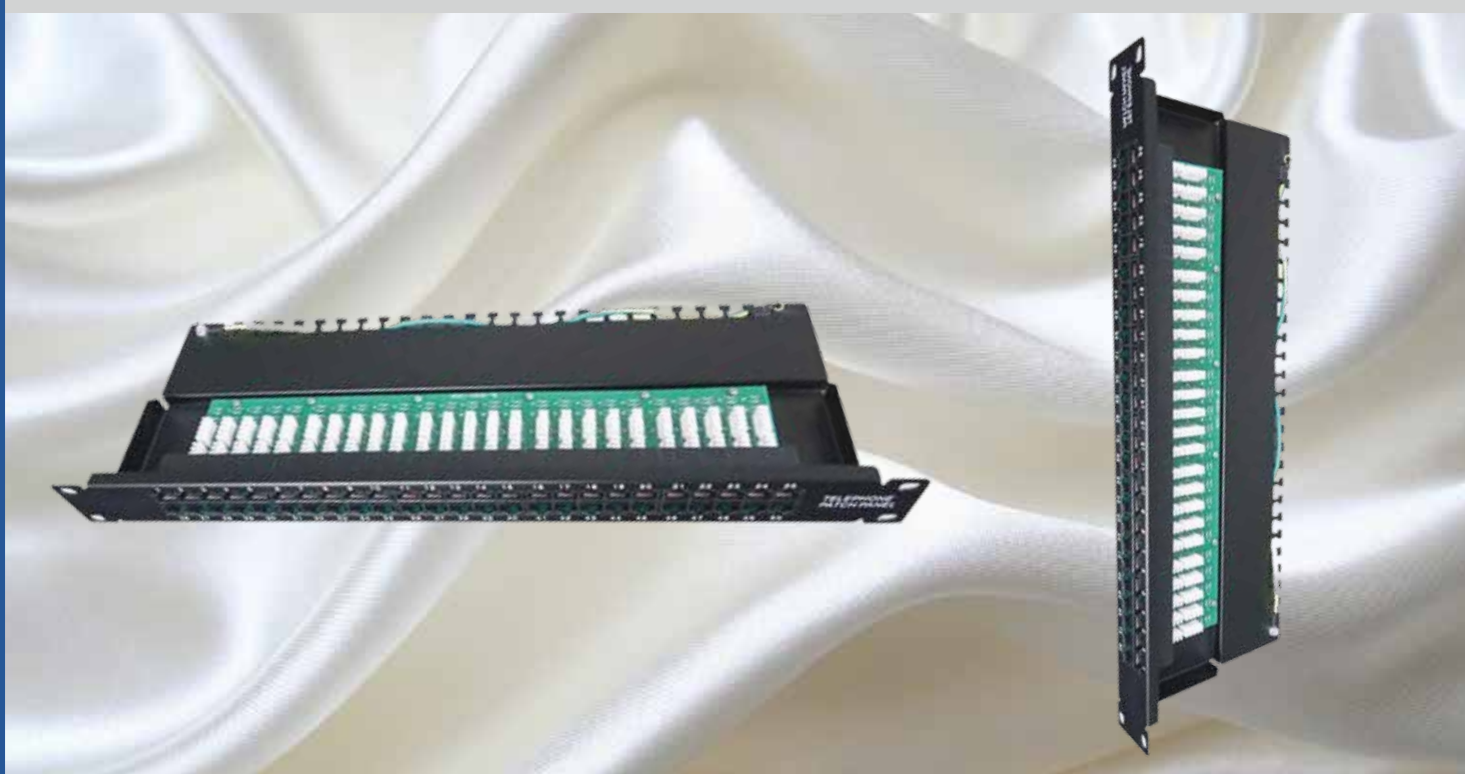
☎ +44 20 8895 6455
✉ info@webbinfra.com
🌐 www.webbinfra.com

1U CAT3 50 Ports UTP Data & Voice Patch Panel

UTP Voice (CAT3) patch panels are 19inch rack mountable IDC/PCB moulded jack patch panels. All panels comply with the EIA/TIA standard for category 3 and are available in 50 port density.

Features

- CAT3 data and voice patch panel with 50 ports
- Angle: 90 Degree
- Termination: LSA IDC
- Adherence to the requirements of:
 - TIA/EIA-568-A and TIA/EIA-568-B category 3
 - TIA/EIA TSB-40
 - Standard 11801 ISO/IEC generic cabling
 - Standard EN50173 CENELEC generic cabling



**Specifications are subject to change without notice based on technical recommendations and related product enhancements*

Specifications

- IDC - PC UL94V-0
- Designed for 22-26 AWG solid conductors
- Patch panel rear is attached with cable managers for suitable cable management
- High resistance capability
- PCB - FR-4 1.60 mm (0.06") two impenetrable layers
- Contacts: 0.45 mm (0.018") phosphor bronze with 3U to 50U diameter gold coating on contact area
- Housing: ABS or PC
- Color and numerical display of IDC modules at the panel rear

Electrical Characteristics

- Current rating: 1.5 A maximum
- Voltage ranking: 150 V
- Contact resistance: 20 mohm
- Insulation: 500 mohm
- Dielectric voltage resistance: 1000 V AC RMS, 60Hz/1minute

Product Description

Part number	C.08.CPPC3.50.UTPS.B.L
Material	SPCC
Temperature interval	-40°C-70°C(storing); -10°C-60°C(installation); -10°C-60°C(working)
Insulation diameter	0.7mm-1.4mm (1.6mm)
Treatment	Powder-glazed
Color	Black/grey

**Specifications are subject to change without notice based on technical recommendations and related product enhancements*